


Advancing the standard in Marine Transport & Offshore Support Operations



OCEAN TOWAGE
ANCHOR HANDLING
OFFSHORE SUPPORT
POSITIONING AND MOORING
EMERGENCY TOWAGE



ALP is a renowned global leader in the marine industry, specializing in ocean towing, offshore positioning, mooring of floating platforms, heavy transport, and emergency operations. With best-in-class equipment, ALP has established itself as the benchmark for marine transport and offshore operations.

Our services are crucial for the success of offshore energy campaigns. We provide transportation services for tailor-made infrastructure required to unlock the value of our customer's investment. These can include drill rigs, construction equipment, FPSOs, FLNGs, floating windmills, and other complex objects. Our clients' selected construction facility and the area of operation are often located on different continents, and they need a reliable subcontractor who understands the challenges and opportunities they may face during transportation.


When our clients entrust their investment to ALP, they expect us to handle their cargo expertly and efficiently, regardless of the weather or sea conditions. We protect our clients' financial interests during transportation from both cost and cashflow perspectives. Our team understands the magnitude of our responsibilities and takes great pride in delivering exceptional services to our clients.

ALP's fleet of eight DP II AHTs, with bollard pulls ranging from 218 to 312 mt, provides an ideal solution. Our vessels are versatile – combining our customer's transport and offshore support requirements - which eliminates the need for multiple vessel types, thereby reducing repositioning and timing risks. They are specifically designed to handle the increased power requirements of FPSOs, FLNGs, and other large floating installations, while their adjustable engine settings and dynamic winches make them suitable for smaller tows as well.

Our vessels are equipped with contingency systems, which ensure their reliability and ability to operate independently for extended duration in remote areas. The dual role of towing, anchor handling, and positioning enables us to offer cost savings and a reduction in the environmental impact of projects.

At ALP, safety and environmental responsibility are our top priorities. We were the first to design a TIER III long-distance towing vessel and are committed to reducing transport emissions to zero in line with the IMO 2050 strategy. Our assets are supporting the global renewable energy supply chain, enabling a swift energy transition. By partnering with ALP, our clients can rely on us to provide efficient and environmentally responsible marine services.

All commercial, operational, and ship-management duties are carried out from our headquarters in Rotterdam, where our experienced project management team ensures that our fleet is maintained to the highest industry standards.



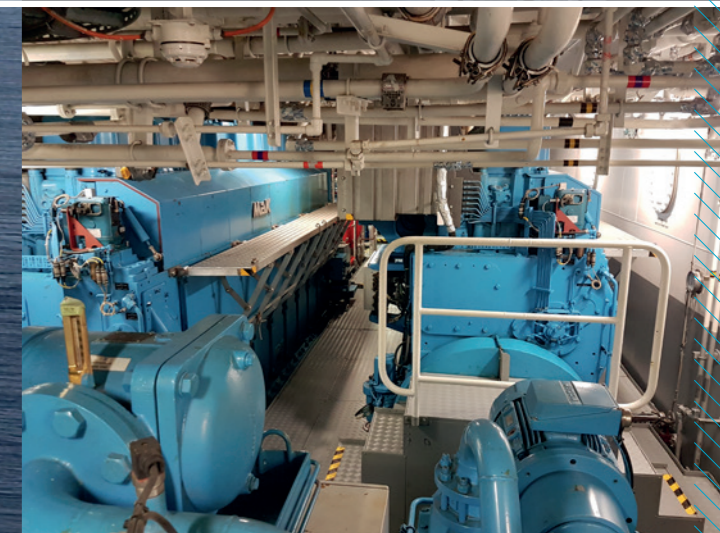
Power of our TEAM

ALP strives to attain operational excellence and provide impeccable customer service. They can rely on returning PICs and crews on board for project management and communication. Our goal is to provide the best-in-class service to our clients.



Efficiency

Our vessels excel in long-distance towing, with up to 15% greater efficiency, resulting in lower fuel consumption and emissions. Providing our clients with direct time and costs savings.



The ALP Sustainability Team is dedicated to leading the organization towards a sustainable future. Sustainability involves fulfilling the current needs without jeopardizing the ability of future generations to do so. To achieve this, we will gather and put into practice tangible initiatives, solutions, and ideas.

These initiatives will be divided into three primary ESG (Environmental, Social, and Governance) categories and will address crucial areas such as environmental protection, employee growth, and ethical and legal compliance.

We have categorized these initiatives into three main categories based on Environmental, Social, and Governance (ESG) factors:

E Environmental: This includes issues such as environmental and climate protection, reducing air and water pollution, energy conservation, and reducing greenhouse gas emissions.

S Social: Our focus is on ensuring safety and security for employees, promoting professional development, establishing responsible supply chains, and supporting local procurement.

G Governance: We aim to optimize our processes, maintain ethical standards, comply with laws and regulations, and avoid sanctions and fines.

By taking these actions, we hope to set an example for the rest of the industry and lead ALP towards a sustainable future.



ALP stays ahead of new developments.

ALP Sustainability Roadmap



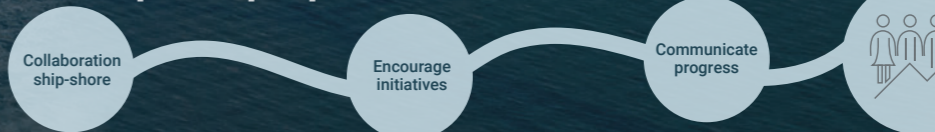
Reduce footprint



Develop business



Empower people



TAKING CONCRETE STEPS TOWARDS A SUSTAINABLE FUTURE





Specs



DP II Anchor Handling Salvage Tug

ALP STRIKER | 312^{mt} Bollard Pull

General Data

CALLSIGN	PDDI
FLAG	The Netherlands
PORT OF REGISTRY	Rotterdam
IMO NUMBER	9737230
BUILT	2016 - Niigata Shipbuilding, Japan
DESIGN	Ulstein SX 157
CLASSIFICATION	✳️ 1A1 Fire fighter(II) Offshore service vessel(+, Anchor handling, Towing) BIS BWM(T) Clean(Design) COMF(V-3) DYNPOS(AUTR) E0 Ice(1B) NAUT(OSV(A)) Recyclable SF TMON
DP NOTATION	DP 2 with external force module
BOLLARD PULL	312 mt 2020
MAXIMUM SPEED	19,0 kts
ECO SPEED	9,0 kts

Main Dimensions

LENGTH O.A.	88,51 mtr
LENGTH B.P.	84,94 mtr
BEAM O.A.	21,00 mtr
DEPTH TO MAINDECK	9,50 mtr
SUMMER DRAUGHT	7,95 mtr
DEADWEIGHT	4.230,3 mt
GROSS TONNAGE	5.901 mt
NETT. TONNAGE	1.771 mt
CARGO DECK AREA	550 m ²
DECK LOAD	10 mt / m ²
CHAIN LOCKER CAPACITY	2x 255,6 m ³

Equipment

TOWING WINCH	Rolls Royce / Brattvaag mod. SL400-3T
1st speed:	401 mt @ 0-13 m/min
BRAKE HOLDING LOAD	600 mt on 1st layer, 675 mt on 1st layer static load
DRUMS CAPACITY	3x 2.000 mtr x 83 mm Ø
CONTROL	Remote controlled from bridge
CABLE LIFTERS	500 mt @ 0 - 9m/min, 2x 76 mm Ø 1x 127 mm Ø
MAIN TOW WIRES	2.000 mtr x 83 mm Ø
SPARE TOWING WIRES	2.000 mtr x 83 mm Ø
1.200 mtr x 83 mm Ø	
WORK WIRES	400 mtr x 83 mm Ø
STORAGE REELS	2 compartments: 2.335 mtr and 550 mtr of 86 mm Ø wire
3 compartments: 990 mtr of 86 mm Ø wire	
STERN ROLLER	2.000 mm Ø, total Length 5.000 mm, 650 mt SWL
DECK WINCH	2x 30 mt pull GOG winch @ 0 - 12 m/min 38 mm Ø, Capacity 720 mtr x 42 mm Ø wire
1x 15 mt pull Tugger winch @ 0 - 30 m/min 28 mm Ø, Capacity 710 mtr x 28 mm Ø wire	
CAPSTANS	2x Rolls Royce, 13,2 mt pull @ 0 - 10 m/min
TOWING PINS	2x Karmoy set of 2 pins 450 mm Ø 300 mt SWL
KARM FORKS	2x Karmoy 500 mm Ø 600 mt SWL
inserts For Chain 50 mm Ø - 125 mm Ø - 165 mm Ø	
QUARTER PINS	2x popup pins 450 mm Ø 300 mt SWL
GIPSY WHEELS	For Chain: (Detachable up to max of 165 mm Ø)
2x 76 mm Ø: Six Pockets width 398 mm and 2.190 mm Ø	
2x 84 mm Ø: Six Pockets width 425 mm and 1.600 mm Ø	
2x 92 mm Ø: Five Pockets width 461 mm and 1.545 mm Ø	
ROV PREPARATION	1x dedicated mezzanine deck available for WROV and LARS
CRANES	Triplex (KNC-60/3.0/105/45). Capacity SWL 3 mt at max 15 mtr
Capacity SWL 6 mt at max 10 mtr	

Tank Capacities

BALLAST WATER	3.103,6 m ³
FRESH WATER	307,6 m ³
MAIN ENGINES	3.183 m ³
AUXILIARY GENERATORS	349 m ³
ENDURANCE AT FULL POWER	49 days
ENDURANCE AT HALF POWER	84 days

Machinery

MAIN ENGINES	18.000 kW / 600 Rpm 4 x 4.500 kW MAK 9M32C
PROPELLERS	4 blades, Berg CPP x 2 with fixed nozzles, 5.000 mm Ø
RUDDERS	Rolls-Royce electro-hydraulic rotary-vane. Type: Flap rudder (SR743 FCP)
BOW THRUSTERS	2x Berg Tunel, CPP 22.4 mt @ 211 Rpm, 1.500 kWt, 2.550 mm Ø
STERN THRUSTERS	2x Berg Tunel, CPP 14.8 mt @ 306 Rpm, 1.050 kWt, 1.950 mm Ø
GENERATORS	3x CAT C32 940 kW @ 1.800 Rpm 60 Hz, 3 phase
SHAFT GENERATORS	2x AEM Shaft Gen 3.150 kWt @ 1.200 Rpm 60 Hz, 3 phase, Driven by ME

Crew occupation

TOWING-19 crew | 24 HR DP-21 crew | 24 AH DP-22 crew

Accommodation

TOTAL ALLOWED PERSONS	35
CABINS	Single berth 25
Double berth 5	
HOSPITAL	Single berth -Category A (24)



DP II Anchor Handling Salvage Tug

ALP DEFENDER | 306^{mt} Bollard Pull

General Data

CALLSIGN	PDEE
FLAG	The Netherlands
PORT OF REGISTRY	Rotterdam
IMO NUMBER	9737242
BUILT	2017 - Niigata Shipbuilding, Japan
DESIGN	Ulstein SX 157
CLASSIFICATION	✳️ 1A1 Fire fighter(II) Offshore service vessel(+, Anchor handling, Towing) BIS BWM(T) Clean(Design) COMF(V-3) DYNPOS(AUTR) E0 Ice(1B) NAUT(OSV(A)) Recyclable SF TMON
DP NOTATION	DP 2 with external force module
BOLLARD PULL	306 mt 2021
MAXIMUM SPEED	19,0 kts
ECO SPEED	9,0 kts

Main Dimensions

LENGTH O.A.	88,51 mtr
LENGTH B.P.	84,94 mtr
BEAM O.A.	21,00 mtr
DEPTH TO MAINDECK	9,50 mtr
SUMMER DRAUGHT	7,95 mtr
DEADWEIGHT	4.216,3 mt
GROSS TONNAGE	5.901 mt
NETT. TONNAGE	1.771 mt
CARGO DECK AREA	550 m ²
DECK LOAD	10 mt / m ²
CHAIN LOCKER CAPACITY	2x 255,6 m ³

Equipment

TOWING WINCH	Rolls Royce / Brattvaag mod. SL400-3T
1st speed:	401 mt @ 0-13 m/min
BRAKE HOLDING LOAD	600 mt on 1st layer, 675 mt on 1st layer static load
DRUMS CAPACITY	3x 2.000 mtr x 83 mm Ø
CONTROL	Remote controlled from bridge
CABLE LIFTERS	500 mt @ 0 - 9m/min, 2x 76 mm Ø 1x 127 mm Ø
MAIN TOW WIRES	2.000 mtr x 83 mm Ø
SPARE TOWING WIRES	2.000 mtr x 83 mm Ø
1.200 mtr x 83 mm Ø	
WORK WIRES	400 mtr x 83 mm Ø
STORAGE REELS	2 compartments: 2.335 mtr and 550 mtr of 86 mm Ø wire
3 compartments: 990 mtr of 86 mm Ø wire	
STERN ROLLER	2.000 mm Ø, total Length 5.000 mm, 650 mt SWL
DECK WINCH	2x 30 mt pull GOG winch @ 0 - 12 m/min 38 mm Ø, Capacity 720 mtr x 42 mm Ø wire
1x 15 mt pull Tugger winch @ 0 - 30 m/min 28 mm Ø, Capacity 710 mtr x 28 mm Ø wire	
CAPSTANS	2x Rolls Royce, 13,2 mt pull @ 0 - 10 m/min
TOWING PINS	2x Karmoy set of 2 pins 450 mm Ø 300 mt SWL
KARM FORKS	2x Karmoy 500 mm Ø 600 mt SWL
inserts For Chain 50 mm Ø - 125 mm Ø - 165 mm Ø	
QUARTER PINS	2x popup pins 450 mm Ø 300 mt SWL
GIPSY WHEELS	For Chain: (Detachable up to max of 165 mm Ø)
2x 76 mm Ø: Six Pockets width 398 mm and 2.190 mm Ø	
2x 84 mm Ø: Six Pockets width 425 mm and 1.600 mm Ø	
2x 92 mm Ø: Five Pockets width 461 mm and 1.545 mm Ø	
ROV PREPARATION	1x dedicated mezzanine deck available for WROV and LARS
CRANES	Triplex (KNC-60/3.0/105/45). Capacity SWL 3 mt at max 15 mtr
Capacity SWL 6 mt at max 10 mtr	

Tank Capacities

BALLAST WATER	3.103,6 m ³
FRESH WATER	307,6 m ³
MAIN ENGINES	3.183 m ³
AUXILIARY GENERATORS	349 m ³
ENDURANCE AT FULL POWER	49 days
ENDURANCE AT HALF POWER	84 days

Machinery

MAIN ENGINES	18.000 kW / 600 Rpm 4 x 4.500 kW MAK 9M32C
PROPELLERS	4 blades, Berg CPP x 2 with fixed nozzles, 5.000 mm Ø
RUDDERS	Rolls-Royce electro-hydraulic rotary-vane. Type: Flap rudder (SR743 FCP)
BOW THRUSTERS	2x Berg Tunel, CPP 22.4 mt @ 211 Rpm, 1.500 kWt, 2.550 mm Ø
STERN THRUSTERS	2x Berg Tunel, CPP 14.8 mt @ 306 Rpm, 1.050 kWt, 1.950 mm Ø
GENERATORS	3x CAT C32 940 kW @ 1.800 Rpm 60 Hz, 3 phase
SHAFT GENERATORS	2x AEM Shaft Gen 3.150 kWt @ 1.200 Rpm 60 Hz, 3 phase, Driven by ME

Crew occupation

TOWING-19 crew | 24 HR DP-21 crew | 24 AH DP-22 crew

Accommodation

TOTAL ALLOWED PERSONS	35
CABINS	Single berth 25
Double berth 5	
HOSPITAL	Single berth -Category A (24)



DP II Anchor Handling Salvage Tug

ALP KEEPER | 302^{mt} Bollard Pull

General Data

CALLSIGN	PDDH
FLAG	The Netherlands
PORT OF REGISTRY	Rotterdam
IMO NUMBER	9737266
BUILT	2016 - Niigata Shipbuilding, Japan
DESIGN	Ulstein SX 157
CLASSIFICATION	✳ 1A1 Fire fighter(II) Offshore service vessel(+, Anchor handling, Towing) BIS BWM(T) Clean(Design) COMF(V-3) DYNPOS(AUTR) E0 Ice(1B) NAUT(OSV(A)) Recyclable SF TMON
DP NOTATION	DP 2 with external force module
BOLLARD PULL	302 mt 2018
MAXIMUM SPEED	19,0 kts
ECO SPEED	9,0 kts

Main Dimensions

LENGTH O.A.	88,51 mtr
LENGTH B.P.	84,94 mtr
BEAM O.A.	21,00 mtr
DEPTH TO MAINDECK	9,50 mtr
SUMMER. DRAUGHT	7,95 mtr
DEADWEIGHT	4.239,3 mt
GROSS TONNAGE	5.901 mt
NETT. TONNAGE	1.771 mt
CARGO DECK AREA	550 m ²
DECK LOAD	10 mt / m ²
CHAIN LOCKER CAPACITY	2x 255,6 m ³

Equipment

TOWING WINCH	Rolls Royce / Brattvaag mod. SL400-3T
1st speed	401 mt @ 0-13 m/min
BRAKE HOLDING LOAD	600 mt on 1st layer, 675 mt on 1st layer static load
DRUMS CAPACITY	3x 2.000 mtr x 83 mm Ø
CONTROL	Remote controlled from bridge
CABLE LIFTERS	500 mt @ 0 - 9m/min, 2x 76 mm Ø 1x 127 mm Ø
MAIN TOW WIRES	2.000 mtr x 83 mm Ø
SPARE TOWING WIRES	2.000 mtr x 83 mm Ø
WORK WIRES	400 mtr x 83 mm Ø
STORAGE REELS	2 compartments: 2.335 mtr and 550 mtr of 86 mm Ø wire
STERN ROLLER	2.000 mm Ø, total Length 5.000 mm, 650 mt SWL
DECK WINCH	2x 30 mt pull GOG winch @ 0 - 12 m/min 38 mm Ø, Capacity 720 mtr x 42 mm Ø wire
QUARTER PINS	1x 15 mt pull Tugger winch @ 0 - 30 m/min 28 mm Ø, Capacity 710 mtr x 28 mm Ø wire
GIPSY WHEELS	2x Karmoy set of 2 pins 450 mm Ø 300 mt SWL
ROV PREPARATION	1x dedicated mezzanine deck available for WROV and LARS
CRANES	Triplex (KNC-60/3.0/105/45). Capacity SWL 3 mt at max 15 mtr

Tank Capacities

BALLAST WATER	3.103,6 m ³
FRESH WATER	307,6 m ³
MAIN ENGINES	3.183 m ³
AUXILIARY GENERATORS	349 m ³
ENDURANCE AT FULL POWER	49 days
ENDURANCE AT HALF POWER	84 days

Machinery

MAIN ENGINES	18.000 kW / 600 Rpm 4 x 4.500 kW MAK 9M32C
PROPELLERS	4 blades, Berg CPP x 2 with fixed nozzles, 5.000 mm Ø
RUDDERS	Rolls-Royce electro-hydraulic rotary-vane. Type: Flap rudder (SR743 FCP)
BOW THRUSTERS	2x Berg Tunel, CPP 22.4 mt @ 211 Rpm, 1.500 kWt, 2.550 mm Ø
STERN THRUSTERS	2x Berg Tunel, CPP 14.8 mt @ 306 Rpm, 1.050 kWt, 1.950 mm Ø
GENERATORS	3x CAT C32 940 kW @ 1.800 Rpm 60 Hz, 3 phase
SHAFT GENERATORS	2x AEM Shaft Gen 3.150 kWt @ 1.200 Rpm 60 Hz, 3 phase, Driven by ME

Crew occupation

TOWING-19 crew | 24 HR DP-21 crew | 24 AH DP-22 crew

Accommodation

TOTAL ALLOWED PERSONS	35
CABINS	Single berth 25
HOSPITAL	Single berth -Category A (24)



DP II Anchor Handling Salvage Tug

ALP SWEEPER | 303^{mt} Bollard Pull

General Data

CALLSIGN	PDDF
FLAG	The Netherlands
PORT OF REGISTRY	Rotterdam
IMO NUMBER	9737254
BUILT	2017 - Niigata Shipbuilding, Japan
DESIGN	Ulstein SX 157
CLASSIFICATION	✳ 1A1 Fire fighter(II) Offshore service vessel(+, Anchor handling, Towing) BIS BWM(T) Clean(Design) COMF(V-3) DYNPOS(AUTR) E0 Ice(1B) NAUT(OSV(A)) Recyclable SF TMON
DP NOTATION	DP 2 with external force module
BOLLARD PULL	303 mt 2017
MAXIMUM SPEED	19,0 kts
ECO SPEED	9,0 kts

Main Dimensions

LENGTH O.A.	88,51 mtr
LENGTH B.P.	84,94 mtr
BEAM O.A.	21,00 mtr
DEPTH TO MAINDECK	9,50 mtr
SUMMER. DRAUGHT	7,95 mtr
DEADWEIGHT	4.186,5 mt
GROSS TONNAGE	5.901 mt
NETT. TONNAGE	1.771 mt
CARGO DECK AREA	550 m ²
DECK LOAD	10 mt / m ²
CHAIN LOCKER CAPACITY	2x 255,6 m ³

Equipment

TOWING WINCH	Rolls Royce / Brattvaag mod. SL400-3T
1st speed	401 mt @ 0-13 m/min
BRAKE HOLDING LOAD	600 mt on 1st layer, 675 mt on 1st layer static load
DRUMS CAPACITY	3x 2.000 mtr x 83 mm Ø
CONTROL	Remote controlled from bridge
CABLE LIFTERS	500 mt @ 0 - 9m/min, 2x 76 mm Ø 1x 127 mm Ø
MAIN TOW WIRES	2.000 mtr x 83 mm Ø
SPARE TOWING WIRES	2.000 mtr x 83 mm Ø
WORK WIRES	400 mtr x 83 mm Ø
STORAGE REELS	2 compartments: 2.335 mtr and 550 mtr of 86 mm Ø wire
STERN ROLLER	2.000 mm Ø, total Length 5.000 mm, 650 mt SWL
DECK WINCH	2x 30 mt pull GOG winch @ 0 - 12 m/min 38 mm Ø, Capacity 720 mtr x 42 mm Ø wire
QUARTER PINS	1x 15 mt pull Tugger winch @ 0 - 30 m/min 28 mm Ø, Capacity 710 mtr x 28 mm Ø wire
GIPSY WHEELS	2x Karmoy set of 2 pins 450 mm Ø 300 mt SWL
ROV PREPARATION	1x dedicated mezzanine deck available for WROV and LARS
CRANES	Triplex (KNC-60/3.0/105/45). Capacity SWL 3 mt at max 15 mtr

Tank Capacities

BALLAST WATER	3.103,6 m ³
FRESH WATER	307,6 m ³
MAIN ENGINES	3.183 m ³
AUXILIARY GENERATORS	349 m ³
ENDURANCE AT FULL POWER	49 days
ENDURANCE AT HALF POWER	84 days

Machinery

MAIN ENGINES	18.000 kW / 600 Rpm 4 x 4.500 kW MAK 9M32C
PROPELLERS	4 blades, Berg CPP x 2 with fixed nozzles, 5.000 mm Ø
RUDDERS	Rolls-Royce electro-hydraulic rotary-vane. Type: Flap rudder (SR743 FCP)
BOW THRUSTERS	2x Berg Tunel, CPP 22.4 mt @ 211 Rpm, 1.500 kWt, 2.550 mm Ø
STERN THRUSTERS	2x Berg Tunel, CPP 14.8 mt @ 306 Rpm, 1.050 kWt, 1.950 mm Ø
GENERATORS	3x CAT C32 940 kW @ 1.800 Rpm 60 Hz, 3 phase
SHAFT GENERATORS	2x AEM Shaft Gen 3.150 kWt @ 1.200 Rpm 60 Hz, 3 phase, Driven by ME

Crew occupation

TOWING-19 crew | 24 HR DP-21 crew | 24 AH DP-22 crew

Accommodation

TOTAL ALLOWED PERSONS	35
CABINS	Single berth 25
HOSPITAL	Single berth -Category A (24)



DP II Anchor Handling Salvage Tug

ALP CENTRE | 297^{mt} Bollard Pull

General Data

CALLSIGN	PCFS
FLAG	The Netherlands
PORT OF REGISTRY	Rotterdam
IMO NUMBER	9398541
BUILT	2010 - Mützelfeldt Yard, Cuxhaven
DESIGN	MAN Ferrostaal AG / Hitzler Werft
CLASSIFICATION	⊛ 100 A5 E Special purpose ship Tug ⊛ MC E AUT DP(2) FF(1)
DP NOTATION	DP 2
BOLLARD PULL	297 mt
MAXIMUM SPEED	16,7 kts
ECO SPEED	9,0 kts

Main Dimensions

LENGTH O.A.	74,30 mtr
LENGTH B.P.	68,94 mtr
BEAM O.A.	20,90 mtr
DEPTH TO MAINDECK	9,5 mtr
SUMMER DRAUGHT	8,25 mtr
DEADWEIGHT	3.486 mt
GROSS TONNAGE	3.732 mt
NETT. TONNAGE	1.119 mt
CARGO DECK AREA	275 m ²
DECK LOAD	10 t / m ²
CHAIN LOCKER CAPACITY	2x 82 m ³

Equipment

TOWING WINCH	Electr. driven 250/500 mt @ 7,5/3,5 m/min
BRAKE HOLDING LOAD	400 mt on Towing drum, 600 mt on AH drums (2pcs), 1st layer
DRUM CAPACITY	1x 1.800 mtr of 83 mm Ø wire, 2x 2.000 mtr x 83 mm Ø wire
CONTROL	Remote controlled from bridge
CABLE LIFTERS	2x 76 mm Ø and 1 x 127 mm Ø
MAIN TOW WIRES	1.600 mtr x 83 mm Ø
SPARE TOWING WIRES	2.000 mtr x 83 mm Ø
WORK WIRES	1.200 mtr x 83 mm Ø
400 mtr x 83 mm Ø	
STORAGE REEL CAPACITY	2x 8.000 mtr x 83 mm Ø (Deck) and 1.200 mtr x 76 mm Ø (ER)
STERN ROLLER	2.000 mm Ø, total length 5.000 mm, 300 mt SWL
CAPSTANS	50 kN @ 0 - 15 m/min / 450 mm Ø
TUGGER WINCHES	2x 100 kN pull @ 0 - 15 m/min 18mm Ø, Capacity 110 mtr x 24 mm Ø Wire
TOWING PINS	2x Karmoy set of 2 pins 300 mt SWL
KARM FORKS	2x Karmoy SWL 650 mt SWL, inserts for chain 50 mm Ø - 125 mm Ø - 165 mm Ø
QUARTER PINS	Retractable / Hydraulic
GIPSY WHEELS	Main winch STB side fixed 3 inch / 76 mm Ø, Main winch PORT side fixed 5 inch / 127 mm Ø
CRANES	2x Storecrane 5.2 mt SWL / reach 14 mtr

Tank Capacities

BALLAST WATER	292 m ³
FRESH WATER	83 m ³
MAIN ENGINES	3.230 m ³
AUXILIARY GENERATORS	130 m ³
ENDURANCE AT FULL POWER	49 days
ENDURANCE AT HALF POWER	84 days

Machinery

MAIN ENGINES	4x MAK 9 MC32 4.500 kW / 600 Rpm
PROPELLERS	2x Wartsila 4D1300 / 115 Rpm / 5.000 mm Ø
RUDDERS	2x Rudder Actuator Rolls-Royce Type SR 723 FCP
BOW THRUSTERS	2x Schottel tunnel thrusters. STT 4 CP / 1.990 mm Ø / 1.200 kW / tons thrust
STERN THRUSTERS	1x Schottel tunnel thruster. STT 1 CP / 1.290 mm Ø / 400 kW / tons thrust
GENERATORS	2x Caterpillar 3412DITA / 500 kW
SHAFT GENERATORS	2x AEM SE 500 L4 / 2.000 kW

Crew occupation

TOWING	- 17 crew 24 HR DP - 19 crew / 2 DPO extra 24 AH DP - 20 crew / 1 BSN & 2x A/B extra
--------	--

Accommodation

TOTAL ALLOWED PERSONS	35 (upgrade possible)
CABINS	Single berth 12 Double berth 9 Four berth 6
HOSPITAL	Double berth



DP II Anchor Handling Salvage Tug

ALP GUARD | 284^{mt} Bollard Pull

General Data

CALLSIGN	PCYY
FLAG	The Netherlands
PORT OF REGISTRY	Rotterdam
IMO NUMBER	9398539
BUILT	2010 - Mützelfeldt Yard, Cuxhaven
DESIGN	MAN Ferrostaal AG / Hitzler Werft
CLASSIFICATION	⊛ 100 A5 E Special purpose ship Tug ⊛ MC E AUT DP(2) FF(1)
DP NOTATION	DP 2
BOLLARD PULL	284 mt
MAXIMUM SPEED	16,7 kts
ECO SPEED	9,0 kts

Main Dimensions

LENGTH O.A.	74,30 mtr
LENGTH B.P.	66,65 mtr
BEAM O.A.	20,90 mtr
DEPTH TO MAINDECK	9,5 mtr
SUMMER DRAUGHT	8,255 mtr
DEADWEIGHT	3.545 mt
GROSS TONNAGE	3.732 mt
NETT. TONNAGE	1.119 mt
CARGO DECK AREA	355 m ²
DECK LOAD	10 t / m ²
CHAIN LOCKER CAPACITY	2x 82 m ³

Equipment

TOWING WINCH	Electr. driven 250/500 mt @ 7,5/3,5 m/min
BRAKE HOLDING LOAD	400 mt on Towing drum, 600 mt on AH drums (2pcs), 1st layer
DRUM CAPACITY	1x 1.800 mtr of 83 mm Ø wire, 2x 2.000 mtr x 83 mm Ø wire
CONTROL	Remote controlled from bridge
CABLE LIFTERS	2x 76 mm Ø and 1 x 127 mm Ø
MAIN TOW WIRES	1.600 mtr x 83 mm Ø
SPARE TOWING WIRES	2.000 mtr x 83 mm Ø
WORK WIRES	1.200 mtr x 83 mm Ø
400 mtr x 83 mm Ø	
STORAGE REEL CAPACITY	2x 8.000 mtr x 83mm Ø (Deck) and 1.200 mtr x 76 mm Ø (ER)
STERN ROLLER	2.000 mm Ø, total length 5.000 mm, 300 mt SWL
CAPSTANS	50 kN @ 0 - 15 m/min / 450 mm Ø
TUGGER WINCHES	2x 100 kN pull @ 0 - 15 m/min 18 mm Ø, Capacity 110 mtr x 24 mm Ø Wire
TOWING PINS	2x Karmoy set of 2 pins 300 mt SWL
KARM FORKS	2x Karmoy SWL 650 mt SWL, inserts for chain 50 mm Ø - 125 mm Ø - 165 mm Ø
QUARTER PINS	Retractable / Hydraulic
GIPSY WHEELS	Main winch STB side fixed 3 inch / 76 mm Ø, Main winch PORT side fixed 5 inch / 127 mm Ø
CRANES	2x Storecrane 5.2 mt SWL / reach 14 mtr

Tank Capacities

BALLAST WATER	292 m ³
FRESH WATER	83 m ³
MAIN ENGINES	3.230 m ³
AUXILIARY GENERATORS	130 m ³
ENDURANCE AT FULL POWER	49 days
ENDURANCE AT HALF POWER	84 days

Machinery

MAIN ENGINES	4x MAK 9 MC32 4.500 kW / 600 Rpm
PROPELLERS	2x Wartsila 4D1300 / 115 Rpm / 5.000 mm Ø
RUDDERS	2x Rudder Actuator Rolls-Royce Type SR 723 FCP
BOW THRUSTERS	2x Schottel tunnel thrusters. STT 4 CP / 1.990 mm Ø / 1.200 kW / tons thrust
STERN THRUSTERS	1x Schottel tunnel thruster. STT 1 CP / 1.290 mm Ø / 400 kW / tons thrust
GENERATORS	2x Caterpillar 3412DITA / 500 kW
SHAFT GENERATORS	2x AEM SE 500 L4 / 2.000 kW

Crew occupation

TOWING	- 17 crew 24 HR DP - 19 crew / 2 DPO extra 24 AH DP - 20 crew / 1 BSN & 2x A/B extra
--------	--

Accommodation

TOTAL ALLOWED PERSONS	35 (upgrade possible)
CABINS	Single berth 12 Double berth 9 Four berth 6
HOSPITAL	Double berth



DP II Anchor Handling Salvage Tug

ALP WINGER | 208^{mt} Bollard Pull

General Data

CALLSIGN	PBIU
FLAG	The Netherlands
PORT OF REGISTRY	Rotterdam
IMO NUMBER	9367504
BUILT	2007 - Mützelfeldt Yard, Cuxhaven
DESIGN	MAN Ferrostaal AG / Hitzler Werft
CLASSIFICATION	✳ 100 A5 E2 Offshore service vessel(AH) Tug DP(2) ✳ MC E2 AUT, FF1
DP NOTATION	DP 2
BOLLARD PULL	208 mt
MAXIMUM SPEED	16,0 kts
ECO SPEED	8,5 kts

Main Dimensions

LENGTH O.A.	65,00 mtr
LENGTH B.P.	60,27 mtr
BEAM O.A.	18,50 mtr
DEPTH TO MAINDECK	8,5 mtr
SUMMER DRAUGHT	7,50 mtr
DEADWEIGHT	3.389 mt
GROSS TONNAGE	2.789 mt
NETT. TONNAGE	836 mt
CARGO DECK AREA	297 m ²
DECK LOAD	10 t / m ²
CHAIN LOCKER CAPACITY	2x 33 m ³

Equipment

TOWING WINCH	Electr. driven 150/300 mt @ 10/5 m/min
BRAKE HOLDING LOAD	326 mt drum's 1st layer
DRUM CAPACITY	1.600 mtr steel rope, 76 mm Ø in 12 layers
CONTROL	Remote controlled from bridge
CABLE LIFTERS	1x 76 mm Ø and 1x 127 mm Ø
MAIN TOW WIRES	1.600 mtr x 76 mm Ø
SPARE TOWING WIRES	1.200 mtr x 76 mm Ø
WORK WIRES	400 mtr x 76 mm Ø
STORAGE REEL CAPACITY	1x 1.600 mtr x 76 mm Ø (Deck) and 1x 1.200 mtr x 76 mm Ø (ER)
STERN ROLLER	2.000 mm Ø, total length 5.000 mm, 300 mt SWL
CAPSTANS	50 kN at 15 m/min (low speed), 25 kN at 30 m/min (high speed)
TUGGER WINCHES	2x 100 kN pull @ 5 - 15 m/min 18 mm Ø
TOWING PINS	2x Karmoy set of 2 pins 300 mt SWL
KARM FORKS	2x Karmoy, 650 mt SWL, inserts for chain 50 mm Ø - 125 mm Ø - 165 mm Ø
QUARTER PINS	Retractable / Hydraulic
GIPSY WHEELS	Main winch STB side fixed 3 inch / 76 mm Ø, Main winch PORT side fixed 5 inch / 127 mm Ø
CRANES	2x Storecrane 5.2 mt SWL / reach 20 mtr

Tank Capacities

BALLAST WATER	323,5 m ³
FRESH WATER	92,2 m ³
MAIN ENGINES	2468 m ³
AUXILIARY GENERATORS	166 m ³
ENDURANCE AT FULL POWER	42 days

Machinery

MAIN ENGINES	2x MAK 6M 32C 3.000 kW, 2x MAK 8M 32C 4.000 kW
PROPELLERS	2x CPP Schottel SCP 1194 XC, 4.400 mm Ø in HR nozzles
RUDDERS	2x Flap Type High Performance Rudders
BOW THRUSTERS	2x Electrically Driven Schottel STT 330 TLK CP, 400 kW, 1.470 Rpm
STERN THRUSTERS	1x Electrically Driven Schottel STT 330 TLK CP, 400 kW, 1.470 Rpm
GENERATORS	2x Caterpillar 3412 DITA, Leroy Somer LSAM 49.1 M6, P=532 kW, 625 kVA, 50 Hz, 400 V
SHAFT GENERATORS	2x AEM SE 450 L4 , P=1.500 kVA

Crew occupation

TOWING	- 15 crew 24 HR DP - 16 crew
24 AH DP	- 17 crew

Accommodation

TOTAL ALLOWED PERSONS	24
CABINS	Single berth 10 Double berth 6 Four berth 1
HOSPITAL	Single berth



DP II Anchor Handling Salvage Tug

ALP FORWARD | 219^{mt} Bollard Pull

General Data

CALLSIGN	PBIU
FLAG	The Netherlands
PORT OF REGISTRY	Rotterdam
IMO NUMBER	9367504
BUILT	2007 - Mützelfeldt Yard, Cuxhaven
DESIGN	MAN Ferrostaal AG / Hitzler Werft
CLASSIFICATION	✳ 100 A5 E2 Offshore service vessel(AH) Tug DP(2) ✳ MC E2 AUT, FF1
DP NOTATION	DP 2
BOLLARD PULL	208 mt
MAXIMUM SPEED	16,0 kts
ECO SPEED	8,5 kts

Main Dimensions

LENGTH O.A.	65,00 mtr
LENGTH B.P.	60,27 mtr
BEAM O.A.	18,50 mtr
DEPTH TO MAINDECK	8,5 mtr
SUMMER DRAUGHT	7,50 mtr
DEADWEIGHT	3.389 mt
GROSS TONNAGE	2.789 mt
NETT. TONNAGE	836 mt
CARGO DECK AREA	297 m ²
DECK LOAD	10 t / m ²
CHAIN LOCKER CAPACITY	2x 33 m ³

Equipment

TOWING WINCH	Electr. driven 150/300 mt @ 10/5 m/min
BRAKE HOLDING LOAD	326 mt drum's 1st layer
DRUM CAPACITY	1.600 mtr steel rope, 76 mm Ø in 12 layers
CONTROL	Remote controlled from bridge
CABLE LIFTERS	1x 76 mm Ø and 1x 127 mm Ø
MAIN TOW WIRES	1.600 mtr x 76 mm Ø
SPARE TOWING WIRES	1.200 mtr x 76 mm Ø
WORK WIRES	400 mtr x 76 mm Ø
STORAGE REEL CAPACITY	1x 1.600 mtr x 76 mm Ø (Deck) and 1x 1.200 mtr x 76 mm Ø (ER)
STERN ROLLER	2.000 mm Ø, total length 5.000 mm, 300 mt SWL
CAPSTANS	50 kN at 15 m/min (low speed), 25 kN at 30 m/min (high speed)
TUGGER WINCHES	2x 100 kN pull @ 5 - 15 m/min 18 mm Ø
TOWING PINS	2x Karmoy set of 2 pins 300 mt SWL
KARM FORKS	2x Karmoy, 650 mt SWL, inserts for chain 50 mm Ø - 125 mm Ø - 165 mm Ø
QUARTER PINS	Retractable / Hydraulic
GIPSY WHEELS	Main winch STB side fixed 3 inch / 76 mm Ø, Main winch PORT side fixed 5 inch / 127 mm Ø
CRANES	2x Storecrane 5.2 mt SWL / reach 20 mtr

Tank Capacities

BALLAST WATER	323,5 m ³
FRESH WATER	92,2 m ³
MAIN ENGINES	2468 m ³
AUXILIARY GENERATORS	166 m ³
ENDURANCE AT FULL POWER	42 days

Machinery

MAIN ENGINES	2x MAK 6M 32C 3.000 kW, 2x MAK 8M 32C 4.000 kW
PROPELLERS	2x CPP Schottel SCP 1194 XC, 4.400 mm Ø in HR nozzles
RUDDERS	2x Flap Type High Performance Rudders
BOW THRUSTERS	2x Electrically Driven Schottel STT 330 TLK CP, 400 kW, 1.470 Rpm
STERN THRUSTERS	1x Electrically Driven Schottel STT 330 TLK CP, 400 kW, 1.470 Rpm
GENERATORS	2x Caterpillar 3412 DITA, Leroy Somer LSAM 49.1 M6, P=532 kW, 625 kVA, 50 Hz, 400 V
SHAFT GENERATORS	2x AEM SE 450 L4 , P=1.500 kVA

Crew occupation

TOWING	- 15 crew 24 HR DP - 16 crew
24 AH DP	- 17 crew

Accommodation

TOTAL ALLOWED PERSONS	24
CABINS	Single berth 10 Double berth 6 Four berth 1
HOSPITAL	Single berth





ALP STRIKER
ROTTERDAM

IMO 9737230

SX157

ULSTEIN
X-BOW

ALP STRIKER

alp

alp



maritime services™

Maastoren, 40th Floor
Wilhelminakade 01 | visitors
Wilhelminakade 95 | mail
3072 AP Rotterdam
The Netherlands

tel +31 10 290 65 50
fax +31 10 290 65 55
alpsales@alpmaritime.com
www.alpmaritime.com





Disclaimer
This brochure is intended to serve general information purposes only. The information in this brochure is composed and maintained with continuous care and attention. However, ALP cannot give any warranty as to the accuracy or completeness of the information. Therefore no rights can be derived from the information in this brochure. ALP is under no circumstances liable for damages of whatever nature, in any way resulting from the use of this information, or resulting direct or indirect from or related to the use of equipment from or actions by companies listed in this brochure.